

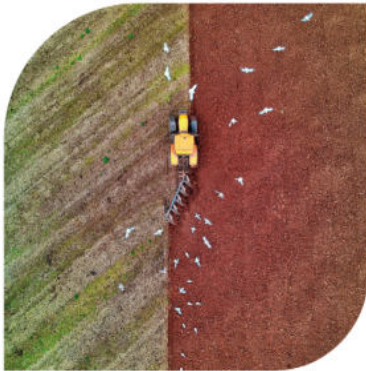
ENGINEERS IN POWDER PROCESSING AND PREPARATION

FINE GRINDING | CLASSIFYING | PROTEIN EXTRACTION

POITTEMILL

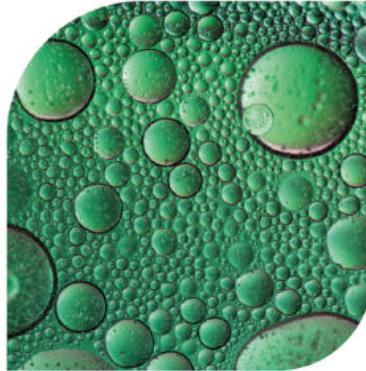


OUR DIVISIONS



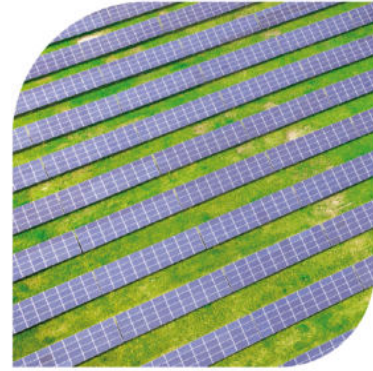
FOOD & FEED

ANIMAL FEED
BEVERAGE AND INSTANT
SPICES
INGREDIENTS
FLOUR MILLING
ALTERNATIVE PROTEINS
SUGAR



CHEMICAL

FERTILIZER
COMPOSITE MATERIALS
PIGMENTS AND DYES
PLASTICS AND POLYMERS



ENERGIES

BATTERIES
BIOMASS
NUCLEAR



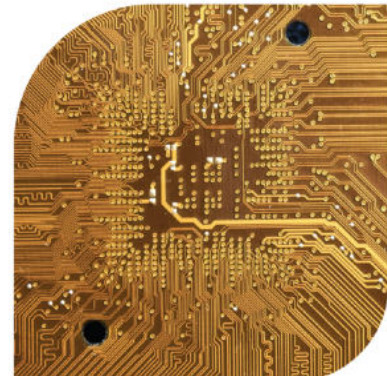
PHARMA & COSMETICS

PHARMACEUTICAL PRODUCTS
COSMETIC PRODUCTS



MINERALS & MATERIALS

CONSTRUCTION MINERALS
INDUSTRIAL MINERALS
RARE EARTHS

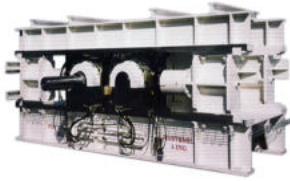


RECYCLING & VALORIZATION

ELECTRONIC CARDS

GRINDING SOLUTION

RP | ROLLER PRESS



Compression grinding using centrifugal force between fixed ring and free rollers fitted on pendulums, fitted with a selector, static or dynamic.

Uses: grinding, grinding-drying.

Minerals: coal, phosphates, limestone, carbonates, bentonites, baryta, clays, petcoke, products down to HGI = 35.

Micron sizes: feed 0-30 mm, output down to 20 μ up to 500 μ .

Throughputs: from 150 kg/h up to 100 T/h.

GRINDING & CRUSHING SOLUTIONS

BRF | DOUBLE ROTOR SPINDLE MILL



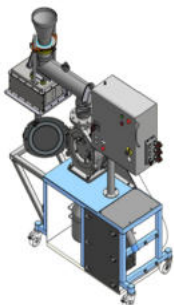
Compression grinding between free balls inside rotating tube. Tube mills, biconical or triconical ball mills.

Uses: Minerals, pigments, cement industry,...

Micron sizes: feed 0-30 mm, output down to 40 μ up to 300 μ .

Throughputs: from 500 kg/h up to 100 T/h.

FK | HAMMER-KNIFE MILL



The Hammer-Knife Universal Mill is the combination between a Hammer Mill and an Universal Mill. As the FORPLEX FNG Mill it can be equipped with different grinding tools (hammer plate ou blade plate) which are adjustable in relation to the product to be ground. The FK Mill has the same advantages as the Universal Pin Mill FNG : easy to use, easy to clean, easy to maintain, but also simplicity of changing the grinding tools or grids.

MA | HAMMER-KNIFE MILL

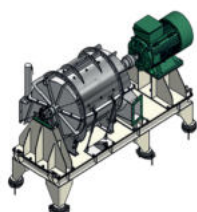


The MA (or Hammer mill) is an impact grinder that crushes the input material between the hammer (or knife) plate and a stator fitted with a sieving screen perforated for the required particle size.

It is generally used as a pre-grinder positioned upstream of a grinding installation. The MA breaks up blocks of raw material into smaller particles capable of being treated by a mill for fine grinding.

GRINDING & DRYING SOLUTIONS

ATTRIMILL



Attrition grinding (autogrounding of particles by friction, impact and shearing). Product is ground between several rotor elements and the stator fitted with a lining.

Uses: grinding, grinding-drying.

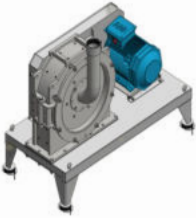
Foodstuffs: caseine, cereals, soya,.... Plastics / elastomers : PVC, NBR, SBS...

Minerals: limestones, carbonates, clay,.... Coating.

Micron sizes: feed 0-8 mm, output down to 40 μ up to 600 μ .

Throughputs: from 5 kgh up to 25 T/h.

FNG | R&D GRINDING UNIT



The Universal FNG mill is an impact grinder that has the key advantage of being fully adaptable. It can be equipped with different grinding tools (hammer plate, pin plate or blade plates) which are adjustable in relation to the product to be ground. The particle size obtained is adjustable via a wide range of sieving screens with varying perforation sizes.

FPX | R&D GRINDING UNIT



FPX main body is made of a machined 316L stainless steel single block, without any welding, in order to avoid any product retention inside the mill. It may be installed in various ways, according to requirements :

- On a mobile platform,
- In a closed (mobile) unit
- Within the production line

PHR | HIGH-YIELD PULVERIZER



PHR is a mill that combines the actions of attrition, impact and shearing. It can be equipped with different rotors that accentuate the effects of attrition or impact. The design integrates easy access for maintenance and the replacement of wearing parts. The mechanical parts are situated outside of the grinding chamber to protect them from damage from high- temperature drying.

PAS | MILL WITH INTEGRATED CLASSIFIER



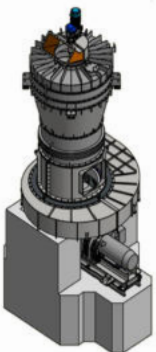
Impact and attrition grinding inside a grinding chamber fitted with a rotor with grinding tools and a stator with a lining. Fitted with a static classifier and a dynamic classifier allowing sharp cut size.

Uses: grinding, grinding-drying.

Micron sizes: feed 0-8 mm output down to 10 μ up to 300 μ .

Throughputs: from 5 kg/h up to 50 T/h.

PM | PENDULUM ROLLER MILL



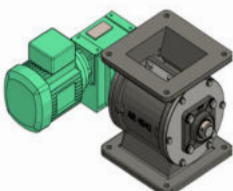
The POITEMILL pendulum roller mill is a vertical mill that works by compressing the material bed. The pendulums mounted on a star wheel are driven by a vertical shaft. Each pendulum is fitted with a grinding roller that rotates upon its axis.

The rotation of the star wheel combines with the articulation of the pendulum to generate a centrifugal force at the grinding roller level.

The product is ground between the grinding roller and the fixed bull ring.

ROTARY VALVE

OBT | ROTARY VALVE



Rotary valves have for function the distribution or the continuous dosing of pulverulent products. Rotary valves was studied specially to be easily adapted to the base of reception hoppers, cyclones, crushers, pneumatic transport and dust removal captation devices... So they are the essential complement to any installation of grinding, pneumatic transport or classification.

CLASSIFYING SOLUTIONS



DYNAIR | DYNAMIC AIR CLASSIFIER

The DYNAIR is a Double Whizzer Dynamic classifier:

This type of separator is usually installed on Pendulum Roller mills but can be used in a pneumatic circuit, alone or combined with a Pulverizer or Ball mill with the possibility of recycling the over-sized particles.

Throughput up to : 200 tons/h

Feeding up to : 5 millimeters

Cutdown to : 40 microns



SHR | HIGH YIELD CLASSIFIER

The SHR is the latest generation of our High Efficiency Dynamic Classifier. Our new SHR is used to classify a large range of particles (d98 from 5 to 1000 microns) at a high level of efficiency.

The SHR is fitted with our patented air seal SEALMAX which allows a very sharp top cut even for very high fineness. The SHR is able to reach high fineness up to D98 5 microns depending on the product. It has been designed to be coupled with every type of mill.

Throughput up to : 600 tons/h

Feeding up to : 5 millimeters

Cutdown to : 5 microns



MICRODYN | DYNAMIC MICRO CLASSIFIER

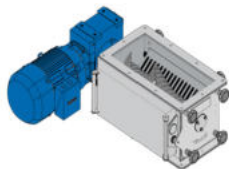
The MICRODYN is composed of one or several variable speed classification rotors, clean air for rinsing and a waste discharge spout. It is particularly effective for the production of very fine powder from a pulverulent produced by an existing grinding process.

The fine particles are transported by the pneumatic circuit towards a finished product collector (cyclone or filter for finer products). The over-sized particles are evacuated out of the circuit along a skirt or through a rotary valve.

Throughput up to : 30 tons/h

Cutdown to : 150 microns

LUMPBREAKING SOLUTIONS



EHX | CLASSIC LUMPBREAKER

The EHX Lumpbreaker is designed to break down crumbly products that are in a clustered, clogged, chunk or block form. 3 types of adaptable rotors are available depending on the products and/or applications: Knife rotor, Blade rotor and Coil rotor:

Throughput up to : 500 kg/h

Power installed up to : 10 kW

Low rotation speed : less than 1m/s



ELX | LABORATORY LUMPBREAKER

The ELX lumpbreaker can be easily cleaned, and access to the inside and to parts in contact with the product is easy. Usually fitted with a knife rotor, the ELX lumpbreaker can also be used with a blade rotor, better suited for finer products that tend to clog. Fineness depends on the perforation of the sieving screen. Thanks to the low rotation speed, the FORPLEX lumpbreakers can work without damaging the product properties, in particular without heating and without producing powder.

Throughput up to : 500 kg/h

Fineness down to: 1 millimeter

Engineers in powder processing

Specific processes and technologies

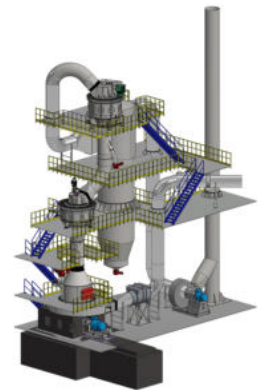
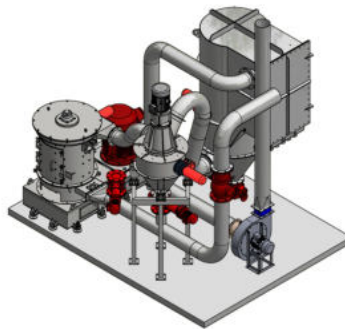
The infinite variety of materials and the diversity of their physical characteristics requires specific size reduction and classifying processes.

A wide range of equipment

Thanks to their wide range of systems for size reduction, drying and classifying, POITTEMILL and FORPLEX are able to meet every dry processing requirement.

Test center in France

With their pilot plant, POITTEMILL and FORPLEX can carry out test trials in order to guarantee an optimized production.



POITTEMILL 

Headquarters

Technoparc Futura
B.P. 145
62403 Béthune Cedex-FRANCE
Tel : 33 (0)3 21 57 2987
Fax : 33 (0)3 21 57 2820
E-mail : poittemill@poittemill.com

www.poittemill.com

TSK

Official Sales Agent in Thailand

T.S.K. ENGINEERING CO.,LTD
6 Moo 5, Nongree ,Mueng,
Chonburi 20000 Thailand
Tel : +66 81 9785 538
E-mail : contact@tskengineering.co.th
Facebook : TSK Engineering
Line : @tskengineering

www.tskengineering.co.th